

KARATE, TAEKWONDO, FREESTYLE, BJJ



FEBRUARY
**HALF
TERM**
2010

THE MOST
MAGICAL
FAMILY
MARTIAL ARTS
EXPERIENCE
EVER!



WWW.EFMA2010.EU



THE CHALLENGE HAS BEEN SET... GET INVOLVED, GET EXCITED, BE A PART OF IT TODAY!

OVER THE WEEKEND OF THE 20TH & 21ST FEBRUARY 2010 DISNEYLAND® PARIS IS HOSTING THE 2ND 'EUROPEAN FESTIVAL OF MARTIAL ARTS'. A FANTASTIC MIX OF EXCITING MARTIAL ARTS AND DISNEY FUN!



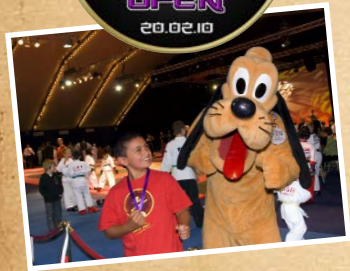
Following the success of the inaugural EFMA show, Fighters Inc & Take Us 2 The Magic Ltd are set to produce another memorable festival featuring the EFMA seminar series, in collaboration with some of the most respected names in martial arts, the EFMA All Stars Challenge which will match some of the best martial teams and individuals against each other in a spectacular fightnight as well as once again a fast moving European tournament open to all!



The European Open - Sat 20th February 2010 – HALF TERM!!

Times Square, Disney's Hotel New York®, Disneyland Paris

Fighters Inc are once again offering young competitors the chance of a once in a lifetime experience to compete in their incredible European Open tournament series organised by one of the most successful promotional forces in the industry. Fighters Inc is behind numerous elite and successful brands, such as the 10K Karate and Ground Clashes, Pain and Glory, Seni the International Combat Sports Expo and now the European Open as part of EFMA at Disneyland Paris.



The European Open offers your club the opportunity to compete in four fantastic disciplines, Karate, Taekwondo, Brazilian Jiu-Jitsu and Freestyle right in the heart of the magical Disneyland Paris. The tournaments will take place in Times Square situated in the amazing surroundings of Disney's Hotel New York and will be uniquely branded with Disney certificates, medals and Character appearances to ensure that the tournament is a genuinely one-off, unforgettable and magical experience for all competitors.

You can either complete the application forms and return them to the tournament coordinator listed or go online at www.theeuropeanopen.eu and tell us what you need in the way of accommodation levels, transport and Disney Park Tickets and we will ensure that no one can beat our EFMA packages where ever you decide to stay!

EFMA promises to be something special for everyone that competes, trains, spectates or gets involved in any way. Be a part of this unique tournament experience and make your competition dreams come true.

We look forward to welcoming you to Disneyland Paris!



The EFMA Seminar Series will feature some of the world's leading martial arts exponents passing on their experience and knowledge in a range of fantastic training sessions specific to your martial art.



EFMA's exclusive evening spectacular embracing all the arts of the European Open in a superb martial arts showcase with some very special guests.

Disneyland PARIS

ACTION PACKED FUN & EXCITEMENT!

RIGHT IN THE MIDDLE OF THE DISNEY MAGIC!

Enjoy the Full Disney Experience! Don't forget, once the tournament is finished you are still right in the middle of the magic of Disneyland® Paris. Europe's number one visitor attraction, packed with heart-stopping thrills and make-believe storybook magic, an experience not to be missed. Take in the Disney atmosphere as you find yourself immersed in two Disney® Park with surprises around every turn.



FAMILY OF
2 AD, 2 CH
PACKAGE £664
ONLY £166
PER PERSON*



FEBRUARY
HALF
TERM
2010

THE BEST DEAL FOR CLUBS & FAMILIES!

MAKE THE MOST OUT OF YOUR EFMA 2010 STAY WITH OUR EXCLUSIVE ADDED VALUE PACKAGES!

We have strived to give you the very best value for money with a choice of fantastic Disney themed hotels along with fantastic EFMA 2010 exclusive inclusions. *Package prices incorporate Disney's Kids Play and Stay Free offer. Passengers aged 12 years or over on the date of travel are classed as adults and children are aged 3-11 years.

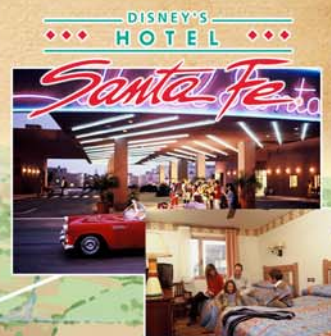
Look what's included in the price

EFMA Disney's Hotel Santa Fe® & Cheyenne® In Resort Packages

- Spectator admission into EFMA 2010
- Spectator admission All Star Challenge evening spectacular
- 'Energise' workshop with mystery special guest instructors for all children
- 3 nights bed and continental breakfast accommodation
- 2 days admission into both the Disneyland® Park and Walt Disney Studios® Park ('Hopper' park pass giving you unlimited entry for 2 days)
- Presence of Disney Characters in your hotel
- Dedicated onsite EFMA staff representatives during your stay
- Passenger Protection Insurance
- Easy access to the Disney® Parks with continuous service of free shuttles from hotels to the parks throughout the day
- Within 5 minutes walk of the Times Square Centre (EFMA venue) in Disney's Hotel New York®. Giving you the flexibility to return to the hotel to freshen up / change at any time

EFMA 3 night Package Prices (per room)

Sharing a room	Santa Fe	Cheyenne
1 adult/2 children	£612	£675
1 adult/3 children	£742	£805
2 adults/1 child	£629	£691
2 adults/2 children	£664	£726
3 adults	£681	£744
3 adults/1 child	£716	£779
4 adults	£808	£868



ALSO AVAILABLE

ONLY A FEW MINUTES BY FREE SHUTTLE BUS TO THE EFMA 2010 VENUE AND DISNEY PARKS



Looking for a 2 night stay? We also offer hotels specially chosen for people wanting a shorter duration stay. Please call for details.

VISIT WWW.EFMA2010.EU
EMAIL ENQUIRY@EFMA2010.EU
CALL 0870 3000 522